



Aqua Edge

Edge Protection System

PRODUCT DESCRIPTION

Aqua Edge is designed for frequent failure happens at the edges coating prevent this kind of failures. Aqua Edge is a two pack Epoxy coating specially designed for sharp edge to build up thickness like at the edges to prevent the flanges, bolts ,nuts and welded joints from corrosion deterioration.

PRODUCT APPLICATION

Aqua Edge suitable for use in both new construction and as a maintenance finish which can be used in a wide variety of substrate having sharp edges like flanges, bolts ,nuts ,L- Angle ,I – Beam.

PRODUCT INFORMATION

Color	Grey
Packing	100ml,200ml and on Request
Volume Solids	90% (ASTM 2697-86)
Working Pot Life	20 to 30 minutes at 30°C
Coating Layer	1 -2
Touch Dry	3 – 4 hrs at 30°C
Hard Dry	24 – 48 hrs at 30°C
Temperature Resistance	5°C ~ 150°C (During Application)
Temperature Resistance	-20C ~ 150°C (After Full Cure)
Mixing Ratio	Epoxy and Hardener (5:1) by weight only
Shelf Life	At least 24 month when stored in sealed containers

APPLICATION DATA

Coating Thickness	300 ~ 500 µm(DFT) for onetime application
Coating System Recommendation	Primer → Aqua Sealer Mid Coat → Aqua Edge (300 ~ 500 µm) for the edges only. Top Coat → Aqua PU (50 ~ 75 µm)
Method of application	Brush only with slow stroke during application of Aqua Edge.
Thinning ratio	Not Applicable
Cleaner	Xylene / Aqua EP Thinner /Aqua Cleaner

ENVIRONMENTAL CONDITIONS

- ✓ Air Temperature 5 ~ 50°C
- ✓ Substrate Temperature 5 ~ 60°C
- ✓ Relative Humidity :- > 95%



SEA HORSE SERVICES SDN.BHD

Aqua Edge

Edge Protection System

APPLICATION - FLANGE ,BOLTS AND NUTS



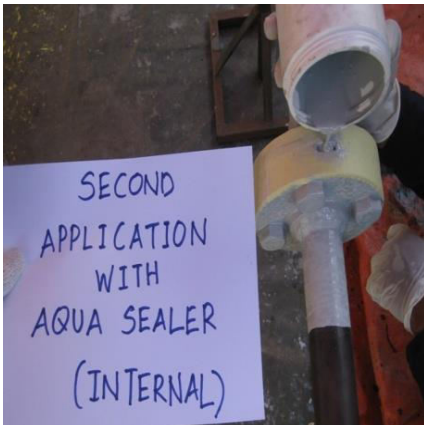
Aqua Edge application on the edges of Flange, Bolts & Nuts



Aqua Edge after application



Aqua Sealer application (External surface)



Aqua Sealer application (External surface)



Aqua Sealer second application (External surface)



Aqua Sealer after application



Aqua PU after application



APPLICATION - L ANGLE



L - Angle Before



Aqua Edge(Grey) after application



Aqua Edge after one time application

APPLICATION - STEEL PANELS



Steel Panel - Before



Aqua Edge(Grey) after application



Aqua Edge after one time application